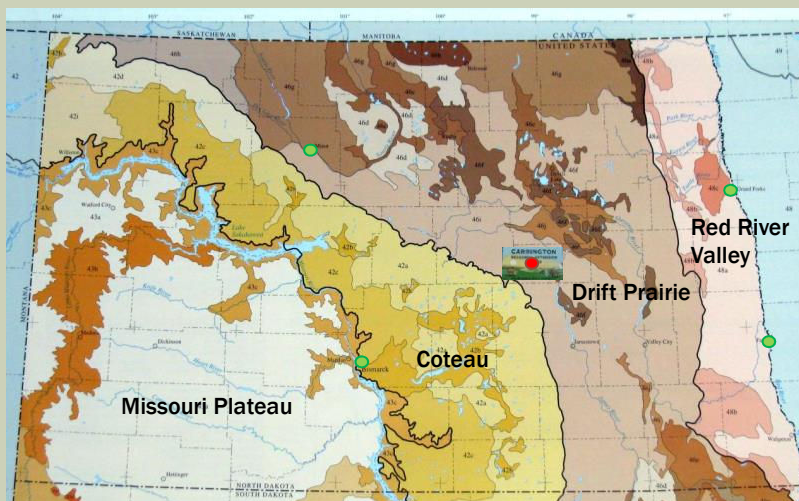


GROWING JUNEBERRIES

Kathy Wiederholt
Fruit Project Manager
NDSU - Carrington Research Extension Center



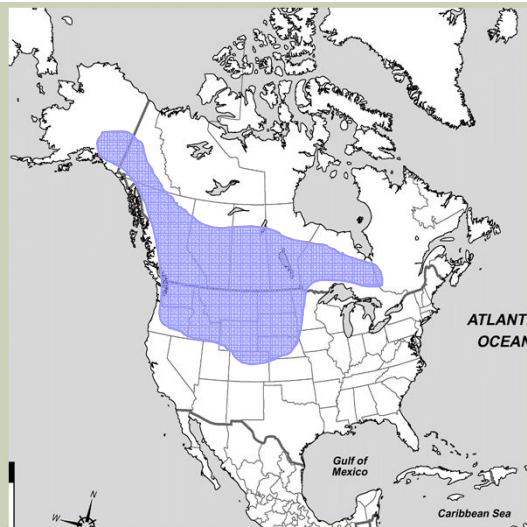
REGIONS OF NORTH DAKOTA



SIX-ACRE STUDY AREA



AMELANCHIER ALNIFOLIA RANGE



JUNE BERRY FRUIT



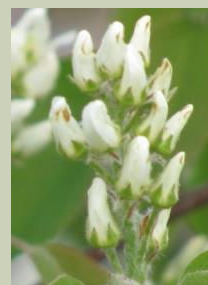
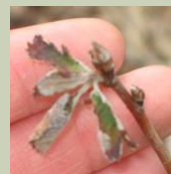
JUNE BERRIES

■ Yield

- 4th year – 1.8 lbs/plant (2010)
- 7th year – 3.8 lbs/plant (2013)
- 10th year – 7.6 lbs/plant (2016)

■ Notes

- Well-known, well-loved
- Native diseases
 - Woolly elm aphids, thrips
 - leaf & berry spot fungus, rust
- Hand harvest mid-July
- *Martin, Thiessen, JB30* - recommended



JUNEBSERRIES NEED NETTING



5 varieties – 100 plants in Variety Trial

ENTOMOSPORIUM

Entomosporium Leaf and Berry Spot

■ The most serious fungal disease of Juneberry

- Every year on new basal shoots
- All leaves and fruit in warmer, wetter years.

- Thin shrubs
- Water with drip irrigation
- Keep weeds down
- Spray with Fungicides
 - Propiconazole



WOOLY ELM APHIDS

Wooly Elm Aphid

- **Among the most destructive pests of Juneberry**

- Can destroy the roots of Juneberry – esp new plantings
- Aphids migrate from elms in mid-June to early July

- Net new plantings
- Ladybugs and syrphid flies
- Systemic insecticides
- Diatomaceous earth?



RUST

Juniper-Apple Rust (aka Cedar-Apple Rust)

- **A serious disease in some parts of the country.**

- Not too bad in east-central ND
- Galls on juniper release spores after rain in early summer
- Spores grow on *Rosa* leaves and travel back to junipers

- Avoid planting near juniper
- Prune galls out of junipers
- Spray with a fungicide
 - Propiconazole
 - Homeowner: Paraffinic oil - only compound recommended by Cornell University



FLOWER THRIPS

Flower Thrips

- **A problem in North Dakota**

- Tiny insects chew on flowers
- Future fruit has woody scar

CREC uses:

- Azaguard (a Neem product)
 - Spinosad
 - Pyganic
- Rotate chemicals until flowers open



FIRE BLIGHT

Fire Blight

- **A bacterial disease that affects *Rosacea* sp like apples and juneberries**

- A sudden wilting of new shoots in a crook-shaped manner
- Spread during flowering primarily by bees
- Also by rain and pruning tools

- No products labeled for fireblight in Juneberries.
- Prune out affected branch 12-14 inches below affected area

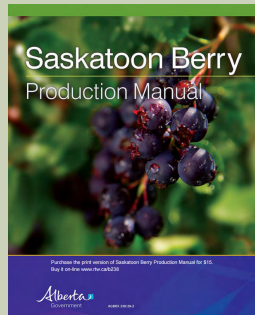


RESOURCES

■ Where to find information on Juneberries:

- 1 **Growing Saskatoons - A Manual For Orchardists.** Richard G. St-Pierre
<http://www.prairie-elements.ca/saskatoons.html>

2



<https://open.alberta.ca/publications/9780773261013>

3



<https://ag.purdue.edu/hla/Hort/Documents/ID-465.pdf>

PLANT SOURCES

US Plant source:

- Saskatoon Michigan *larger quantities*
www.saskatoonmichigan.com
- St Lawrence Nursery – only Thiessen 2017
www.stlawrencenurseries.com
- HoneyberryUSA.com – *Import plants and reship to you*
www.HoneyberryUSA.com

Canadian Plant Source:

- Prairie Plant Systems www.prairieplant.com
- Prairie Tech Propagation www.prairietechpropagation.com
- Select Seedling Nursery www.selectseedlingnursery.com

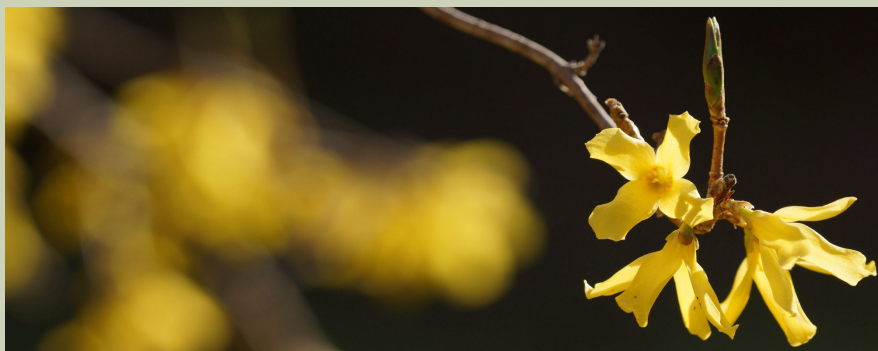
Source names given for reference. Not an endorsement.

JUNEERRIES

■ This is what it's
all about!



THANK YOU !



Kathy Wiederholt, Fruit Project Manager
NDSU-CREC

Kathy.Wiederholt@ndsu.edu

701.652.2951

[Facebook.com/CRECfruit](https://www.facebook.com/CRECfruit)

